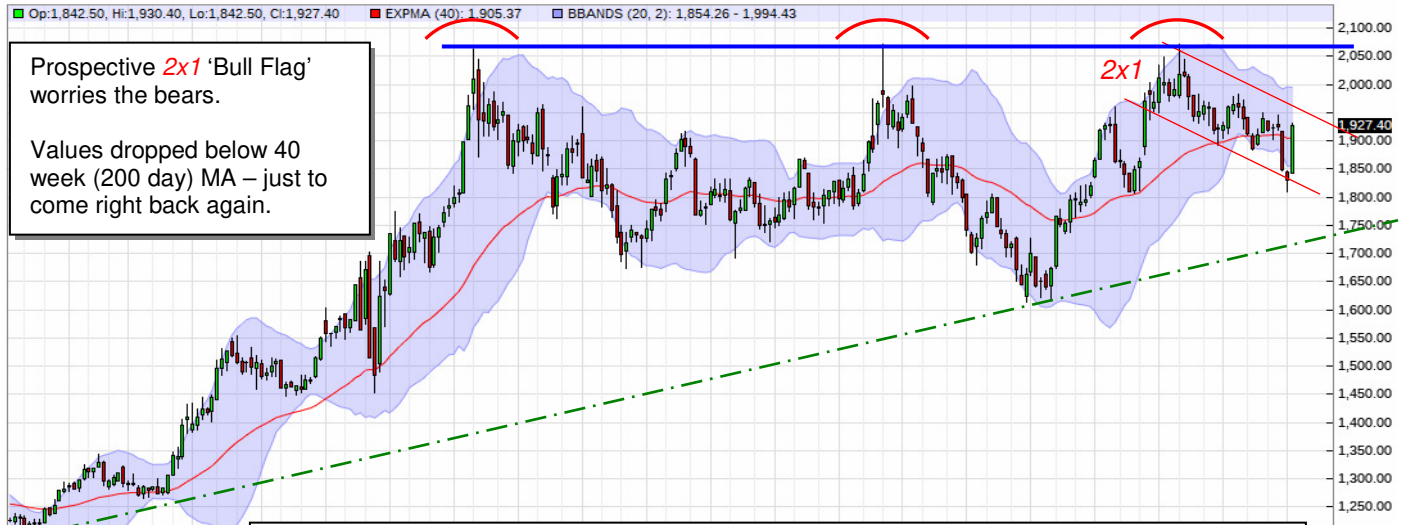


Gold: Weekly (Nearest) Update: 'Triple Top' or 'Ascending Triangle' ?!

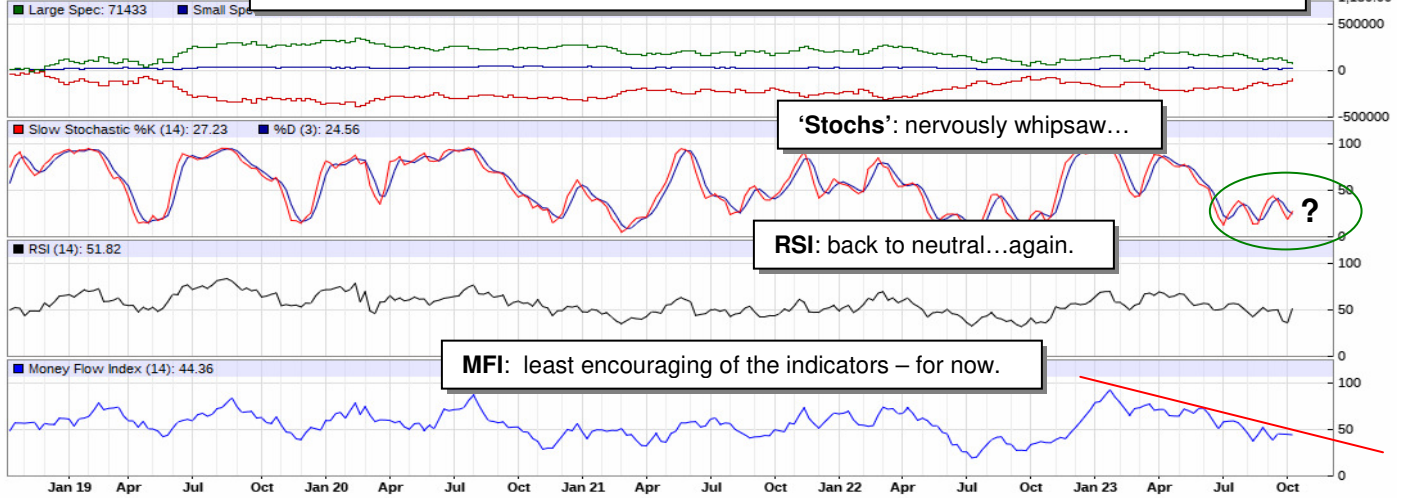
GC - Gold - Weekly Nearest Candlestick Chart



Prospective **2x1** 'Bull Flag' worries the bears.

Values dropped below 40 week (200 day) MA – just to come right back again.

Market internals: **Commercials** pare down their short position; lowest level in a year.



'Stochs': nervously whipsaw...

RSI: back to neutral...again.

MFI: least encouraging of the indicators – for now.

AY - TSX Global Gold - Weekly Nearest Candlestick Chart



Gold mining lagging bullion, ie, lower highs...

?