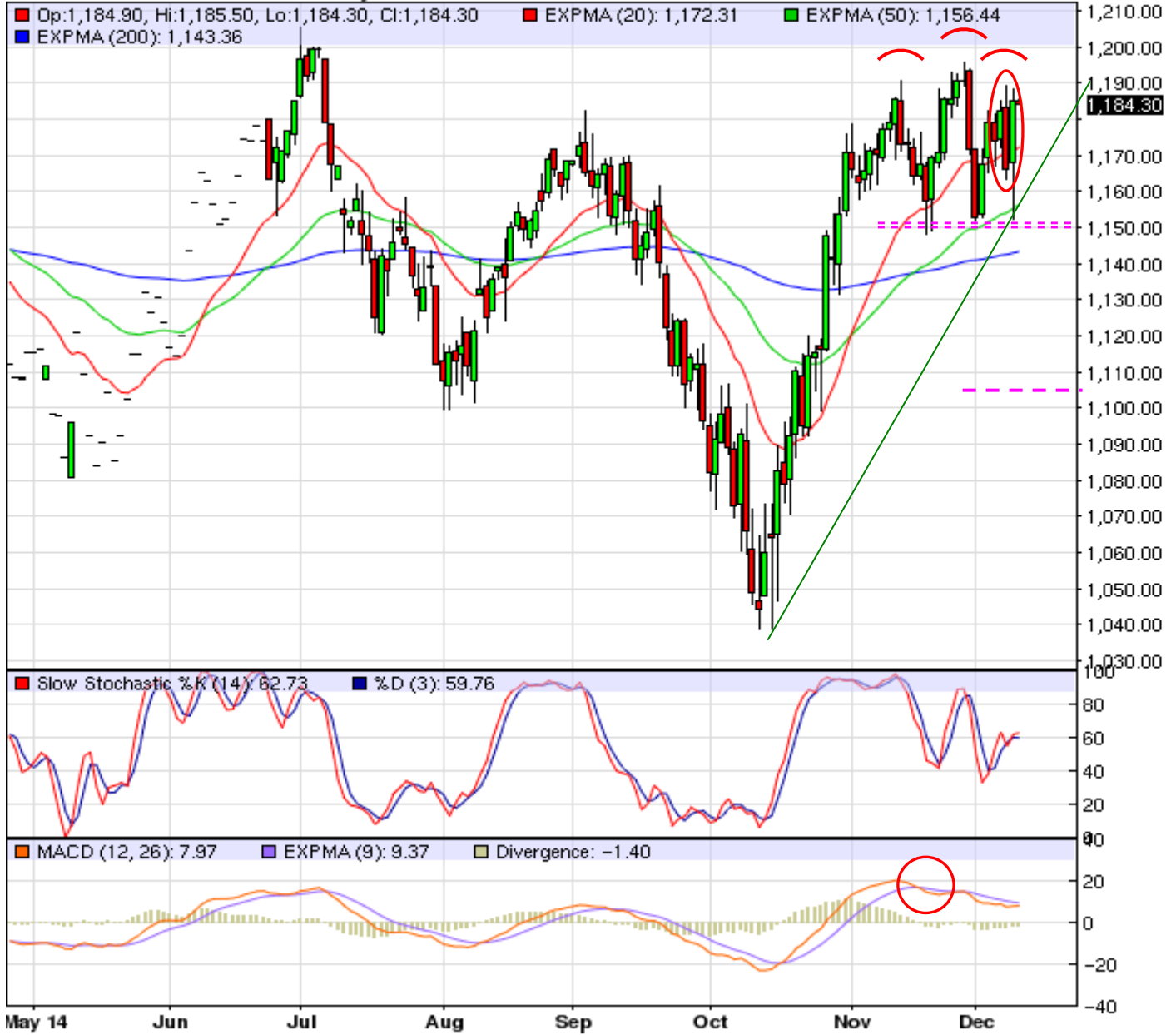


## Russell 2000 Index: Daily: Are some US stocks showing signs of a top?

RJZ14 - Russell 2000 Mini - Daily Candlestick Chart



Possible 'Head & Shoulders' Top:

- 1150 Neckline: if breached, calls for a minimum objective to 1105.

Some bearish considerations:

- Yesterday's 'Key Outside Reversal' to the downside.
- MACD sustains down mode since last month.
- 'Stochs' waffling near neutral: on the verge of turning down?