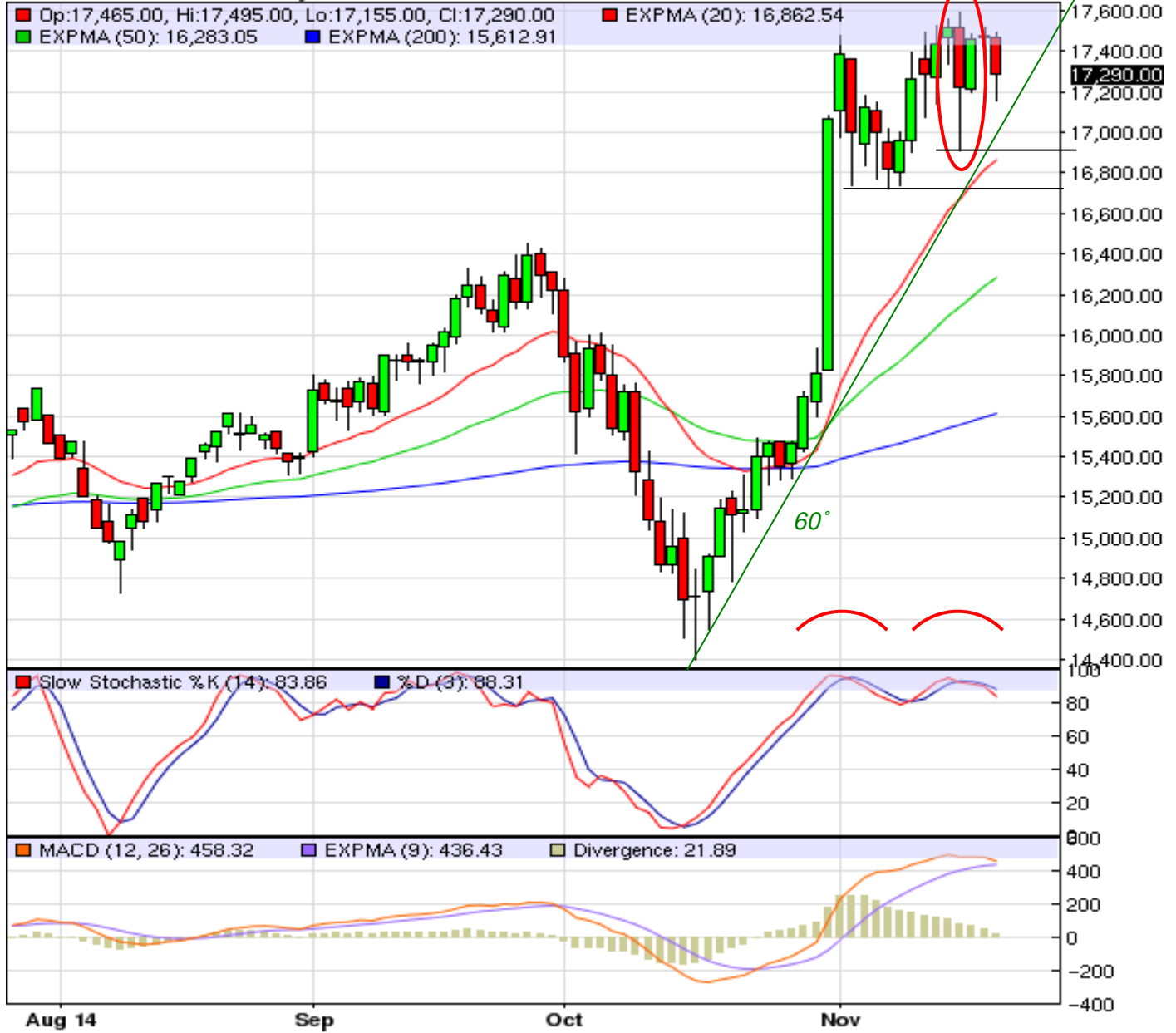


Nikkei Index: Daily: Double Top?

NYZ14 - Nikkei 225 - Daily Candlestick Chart



Despite bullish fundamentals, ie, Japan's recently enhanced "QE" to take Nikkei to 7 year highs, are technicals becoming over-done?

- Possible 'Type 1 Bearish Divergence': higher price peaks vs even 'Stochs' peaks?
- Possible 'Key Outside Reversal' on this past Monday's session?
- 'Stochs' themselves turning down again. MACD converging.
- Near-term Support levels: 16900: Monday's lows & 20 day EMA; 16720: early Nov lows.
- Sustained upside breach of Monday's highs @ 17595 compromises the bears' case.